

# Chasing my Y-DNA part 56

For those who use family Y-DNA;

The screenshot shows the myFTDNA website dashboard. The navigation menu includes Home, My Account, Projects, Family Finder, Y-DNA, mtDNA, Other Results, Resources, and Order An Upgrade. The Y-DNA dropdown menu is open, showing options: Learn More, Matches, Advanced Matching, Ancestral Origins, Haplogroup Origins, Haplotree & SNPs, Matches Maps, Migration Maps, Printable Certificates, SNP Map, and Standard Y-STR Results. The main content area features an 'Interactive Tour - Welcome to myFTDNA' section with an 'Exit Tour' button and a 'Next Topic: The Menu Bar' link. The user is logged in as Mark Stephen Elliott with Kit No: 101829.

Log in go to;

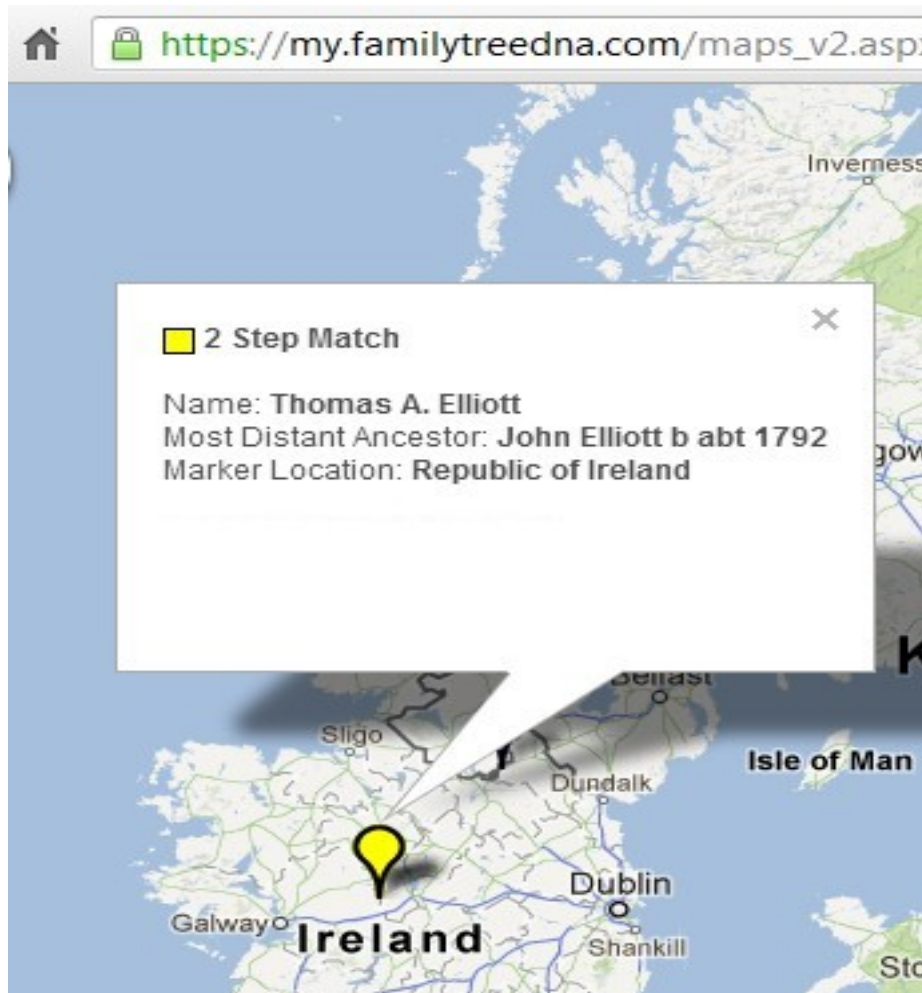
The screenshot shows the Y-DNA 37 Marker Matches map. A pop-up window displays the following information for a 4-step match:

- Name: Ray E. Elliott
- Most Distant Ancestor: Daniel Elliot, Salem, MA; d. 1690, Casco Bay
- Marker Location: Fermanagh St, Clones, Co. Monaghan, Ireland

The map shows the location of Clones, Co. Monaghan, Ireland, with a blue pin. The map includes a zoom control and a 'locator info' label. The bottom of the screen shows the 'Y-DNA 37 Marker Matches: 5' section with a 'Show Match List' button and an 'Update Ancestor's Location' button. A legend for 'Push Pin Match Colors' is also visible, showing colors for You, Exact, 1-Step, 2-Step, 3-Step, 4-Step, 5-Step, 6-Step, and 7-Step.

# Y-DNA

click on Matches Maps;



Thomas A. Elliott

location Republic of Ireland.

Felt this could be anywhere in Ireland.

Y-DNA 12 Marker ▾



Belmu

Enniscrone

Ballina

Tobercurry

Newport

Castlebar

Westport

Claremorris

Tuam

Claregalway

Ballinasloe

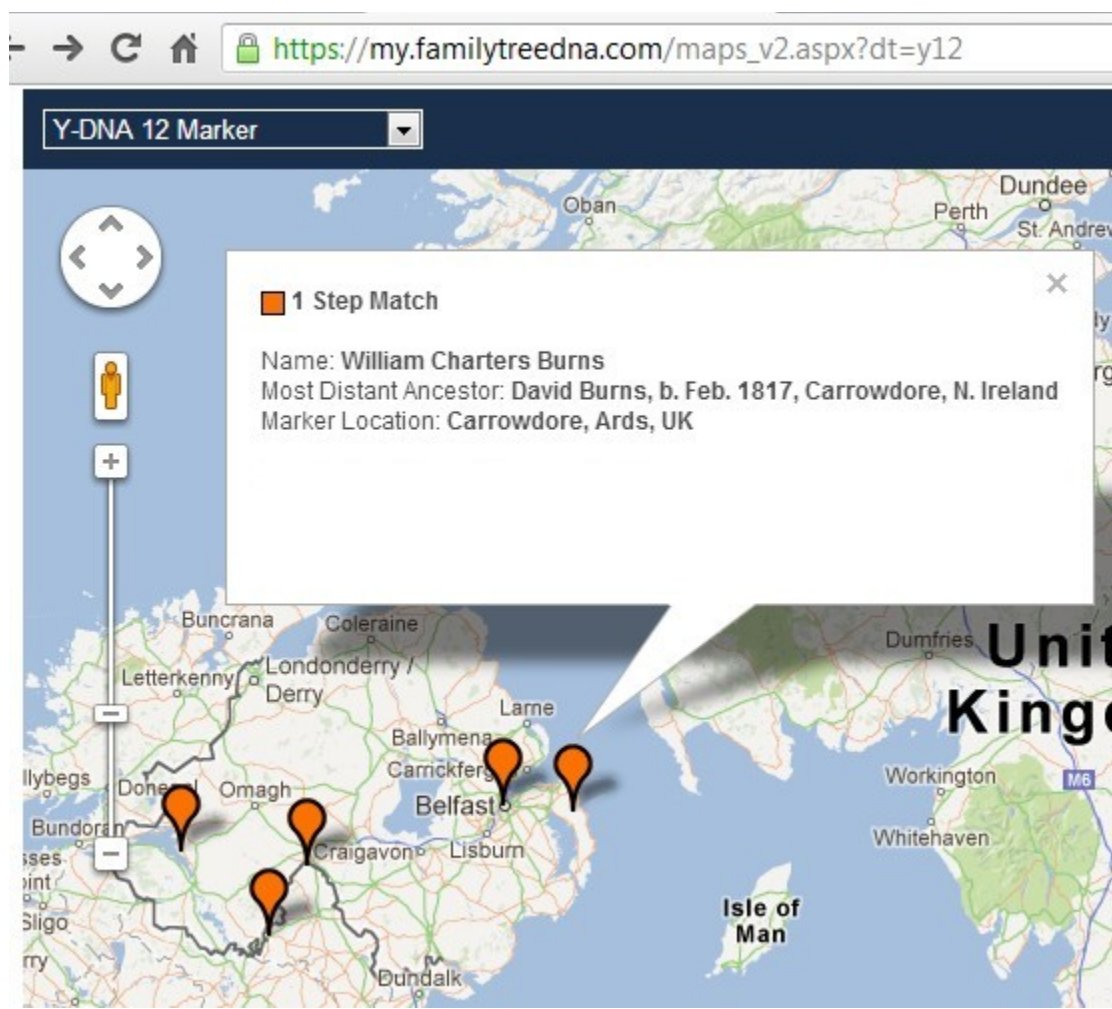
Google

1 Step Match

Name: **Steven C Johnston**  
Most Distant Ancestor: **William Johnston**  
Marker Location: **Fermanagh, UK**







The early family burying place of the Elliots of Fermanagh was in the old churchyard of Augherlurcher.<sup>2</sup> Some tombstones recording the family were extant in 1825, but the author has not had the opportunity of ascertaining if any still remain.

<sup>1</sup> Inquisitions, Fermanagh, 1623.

<sup>2</sup> Also known as Archerlurcher or Augherlaugher.

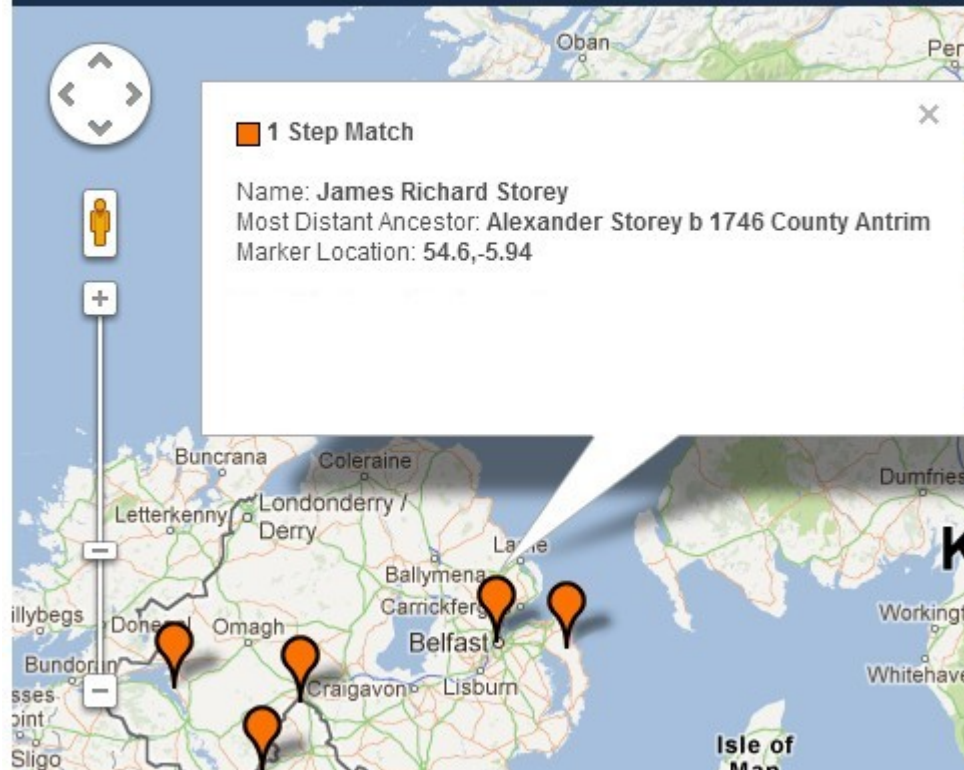
## No Burns in the 1630 muster but ca 1750

Buchanon	Fras.	Creighnahoo, Creenaghoo?	Cleenish	Jul-51
Burnside	Ab.	Tattenaheglis	Aghalurcher	Jan-59
Burnside	Abm.	Tattenaheglis	Aghalurcher	Jul-47
Burnside	Claud.	Owenskerry	Aghalurcher	Jul-47
Burnside	James	Brobrochan	Aghalurcher	Jul-53
Burnside	James	Portmessin		Oct-51
Burnside	John	Tattenaheglis	Aghalurcher	Jan-59
Burnside	John	Waterfoot (Gubnaguinie?)	Templecarn	Oct-51
Burnside	Joseph	Tirennny	Aghalurcher	Jul-47
Burnside	Matt.	Dromaskin		Jul-51
Burnside	Robert	Owenskerry	Aghalurcher	Jan-59
Burnside	Robert	Tattenaheglis	Aghalurcher	May-53
Burnside	Robert	Tattenaheglis	Aghalurcher	Jul-47
Burnside	Thomas	Tattenaheglis	Aghalurcher	Apr-48
Burnside	Thomas	Tirennny	Aghalurcher	Apr-67
Burnside	William	Cornacoskeling		Jul-52
Burnside	William	Lisnabane	Rossory	Jul-51
Busby	Thomas		Enniskillen	Feb-49

freeholders freeholders.



Y-DNA 12 Marker

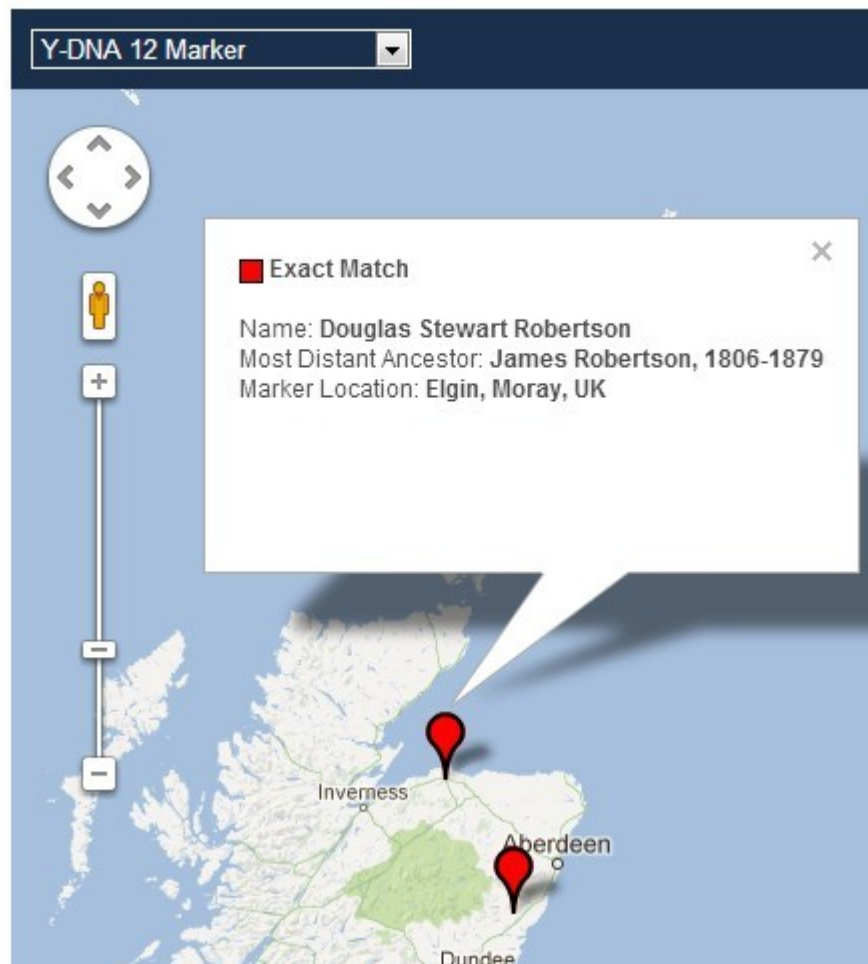


Time to Most Recent Common Ancestor (Years)

ID	modal	Armst	Beaty	Bells	Burns	Carru	Crozi	David	Dixon	Eliot	Danel	Heron	Irwin	Johns	Kerrs	Little	Murray	Musgr	Ruthr	Scott	Tates	Taylr	White
modal	67	660	750	660	570	6000	960	750	570	570	1350	2010	840	840	570	1140	1050	960	660	750	840	1050	1800
Armst	660	67	1140	1140	750	6000	1350	960	1260	1050	1560	2130	1140	1350	840	1470	1140	1350	1350	1050	1350	1470	2250
Beaty	750	1140	67	1260	960	6000	1560	1350	1050	1260	2010	2370	1560	1560	1140	1560	1560	1470	1470	1560	1350	1800	2130
Bells	660	1140	1260	67	840	6000	1560	750	1140	1260	1470	1890	1260	1050	750	1260	1260	1140	1140	1140	1260	1350	2520
Burns	570	750	960	840	67	6000	1140	750	1050	840	1350	1680	1140	960	840	1260	1350	1260	1050	960	1350	1560	2370
Carru	6000	6000	6000	6000	6000	67	6000	5760	5520	5760	6000	6480	5760	5520	5310	6240	5310	4890	5310	5520	6240	5310	6750
Crozi	960	1350	1560	1560	1140	6000	67	1350	1470	1470	1890	2250	1560	1680	1260	1680	1890	1890	1350	1680	1560	1890	1890
David	750	960	1350	750	750	5760	1350	67	1140	1140	1560	1800	960	750	660	1470	1050	1350	1050	840	1050	1470	2640
Dixon	570	1260	1050	1140	1050	5520	1470	1140	67	1140	1470	2370	1350	1140	960	1680	1350	1470	960	1350	1470	1470	2130
Eliot	570	1050	1260	1260	840	5760	1470	1140	1140	67	1680	2250	1350	1050	1050	840	1560	1470	1140	1260	1350	1350	2130
Danel	1350	1560	2010	1470	1350	6000	1890	1560	1470	1680	67	2520	2010	1800	1260	2010	2010	2010	1560	1560	1890	2010	2760
Heron	2010	2130	2370	1890	1680	6480	2250	1800	2370	2250	2520	67	1890	2010	2250	2370	2520	2250	1800	2010	2640	2910	3810
Irwin	840	1140	1560	1260	1140	5760	1560	960	1350	1350	2010	1890	67	1260	1050	1560	1260	1260	1050	840	1350	1350	2640
Johns	840	1350	1560	1050	960	5520	1680	750	1140	1050	1800	2010	1260	67	1050	1350	1470	1560	960	1140	1140	1470	2760
Kerrs	570	840	1140	750	840	5310	1260	660	960	1050	1260	2250	1050	1050	67	1140	840	1050	1260	1050	1140	1260	2250
Little	1140	1470	1560	1260	1260	6240	1680	1470	1680	840	2010	2370	1560	1350	1140	67	1680	1350	1680	1800	1800	1800	2640
Murray	1050	1140	1560	1260	1350	5310	1890	1050	1350	1560	2010	2520	1260	1470	840	1680	67	1680	1680	1140	1800	1560	3180
Musgr	960	1350	1470	1140	1260	4890	1890	1350	1470	1470	2010	2250	1260	1560	1050	1350	1680	67	1350	1260	1470	2010	2250
Ruthr	660	1350	1470	1140	1050	5310	1350	1050	960	1140	1560	1800	1050	960	1260	1680	1680	1350	67	1050	1140	1800	2370
Scott	750	1050	1560	1140	960	5520	1680	840	1350	1260	1560	2010	840	1140	1050	1800	1140	1260	1050	67	1350	1350	2520
Tates	840	1350	1350	1260	1350	6240	1560	1050	1470	1350	1890	2640	1350	1140	1140	1800	1800	1470	1140	1350	67	1560	1890
Taylr	1050	1470	1800	1350	1560	5310	1890	1470	1470	1350	2010	2910	1350	1470	1260	1800	1560	2010	1800	1350	1560	67	2640
White	1800	2250	2130	2520	2370	6750	1890	2640	2130	2130	2760	3810	2640	2760	2250	2640	3180	2250	2370	2520	1890	2640	67

- Infinite allele mutation model is used  
 - Average mutation rate varies: 0.0027 to 0.0027 rates derived by Doug McDonald from the Sorenson database  
 - Values on the diagonal indicate number of markers tested  
 - Probability is 50% that the TMRCA is no longer than indicated  
 - Average generation: 30 years

Storey, and Burns, are reiver names.  
**Burns** seems to be a match within 570yrs.  
Makes on think this match could be in  
Ulster. About 260 years ago.



Douglas Stewart Robertson is felt to be a  
border name.

## LIDDELL

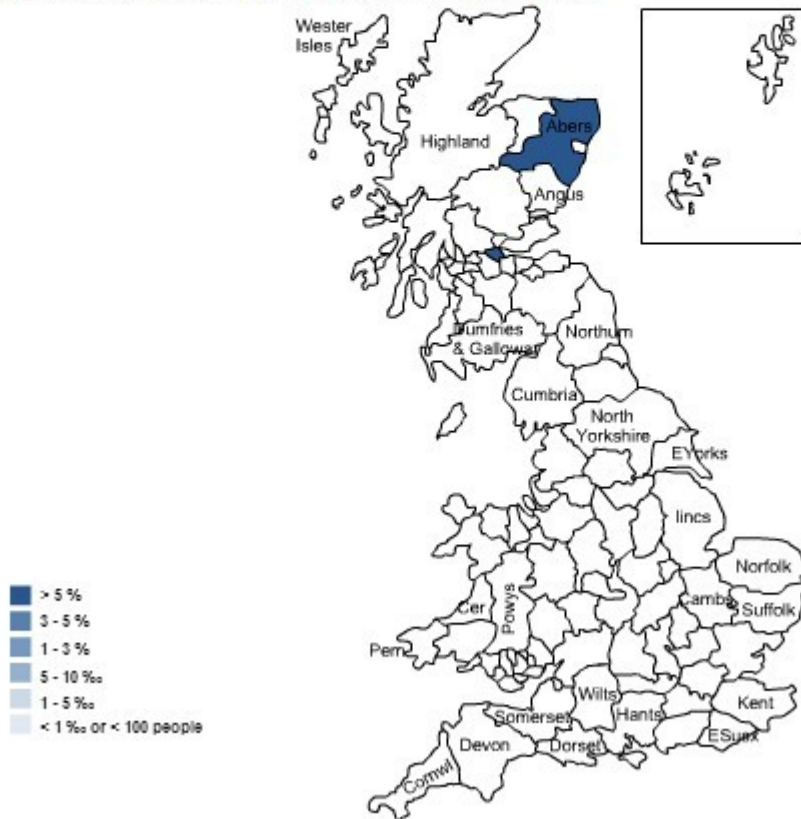
In Great Britain : **3 189** people share the surname Liddell according to our estimation  
The surname Liddell is the **3 308<sup>th</sup>** most common name in Great Britain.

all about the name Liddell :

**Geographical spread - Data by county - Sorted by county**

### GEOGRAPHICAL SPREAD

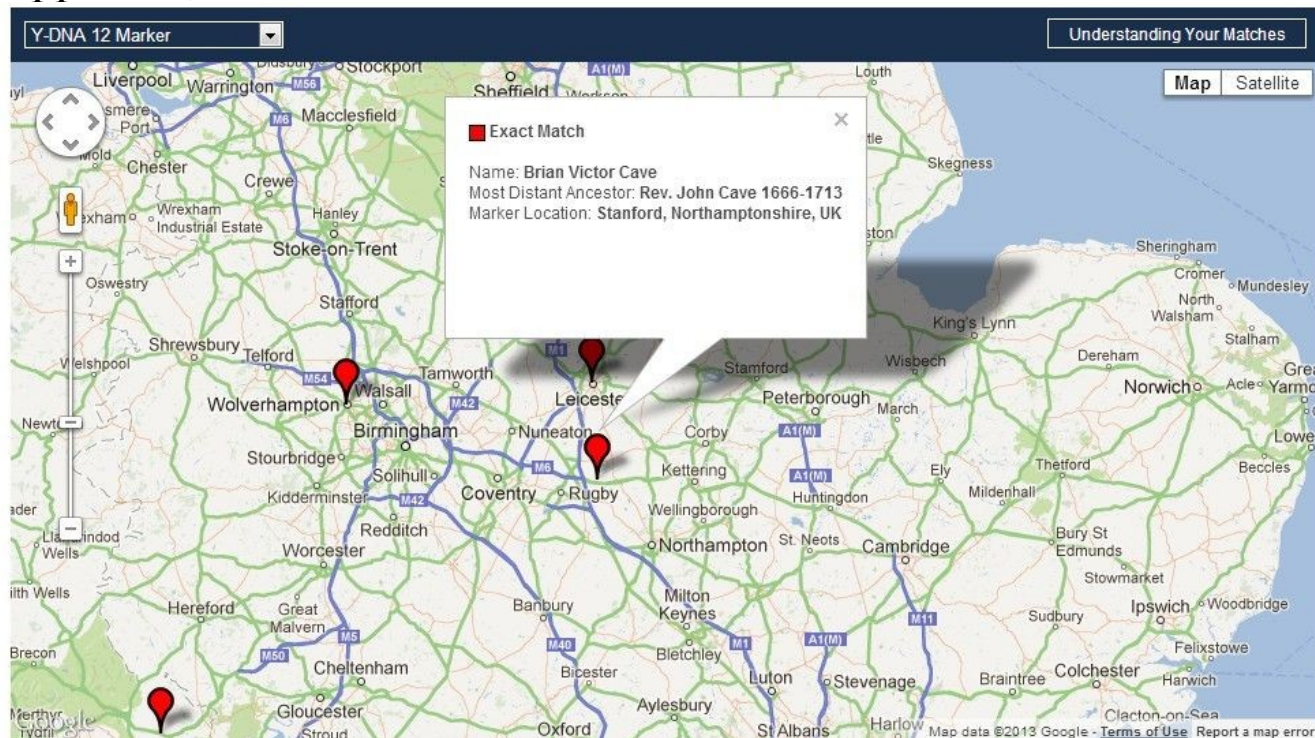
This map shows the geographical spread by county of surname Liddell in Great Britain. For example you can see below that over 5 % people whose name is Liddell live in **Falkirk**.



Liddell is a geographic name of the Liddell region on the borders; giving strong indication of displacement from the borders. The point is to indicate displacement from the borders felt at the time of Union of Crown, mainly to Ulster, but some splattered north.



# Appendix;



## Re: Rev. John Cave of England

Posted by: [Sharon](#)

Date: June 26, 2000 at 07:53:08

In Reply to: [Re: Rev. John Cave of England](#) by Jon Cave

427 of 1267 [Go](#)

This Rev. John Cave died in Stanford, England after being turned out of his home with wife and six children after the rebellion of 1543 and died a broken man Nov. 1657. This is how I have his Lineage.

Jordayne De Cave

Bryan De Cave m. Joan Fossard

Thomas De Cave m. Joyce St. Quinton

Geoffry De Cave m. Mabel Saltmarsh

Peter De Cave m. Miss Bromflete

Sir Alexander Cave m. Miss De Mawley

Peter Cave m. Ann Ward

Sir Alexander Cave m. Alice Hotham

John Cave m. Mary Genell

Sir Alexander m. Catherine Somerville

Peter Cave m. Ann Ingleby

Peter Cave m. Mary Burdet

Thomas Esq. m. Thomasine Passmere

Richard Cave m. Margaret Sarby

Richard Cave. m. Barbara Fielding

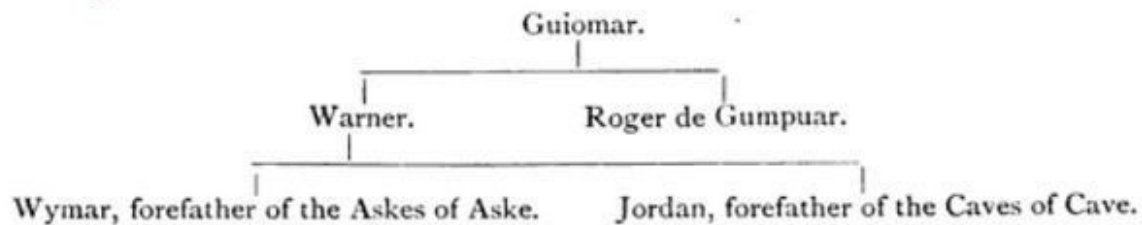
Rev. John Cave

If you have any info or suggestions I would appreciate it. I read Rick's page and noticed that he had John Cave as Benjamins father. That could be right. I got all of this from a book that a lady wrote about her ancestors. I have copies somewhere in my stacks but don't know where it is at this moment. Sharon

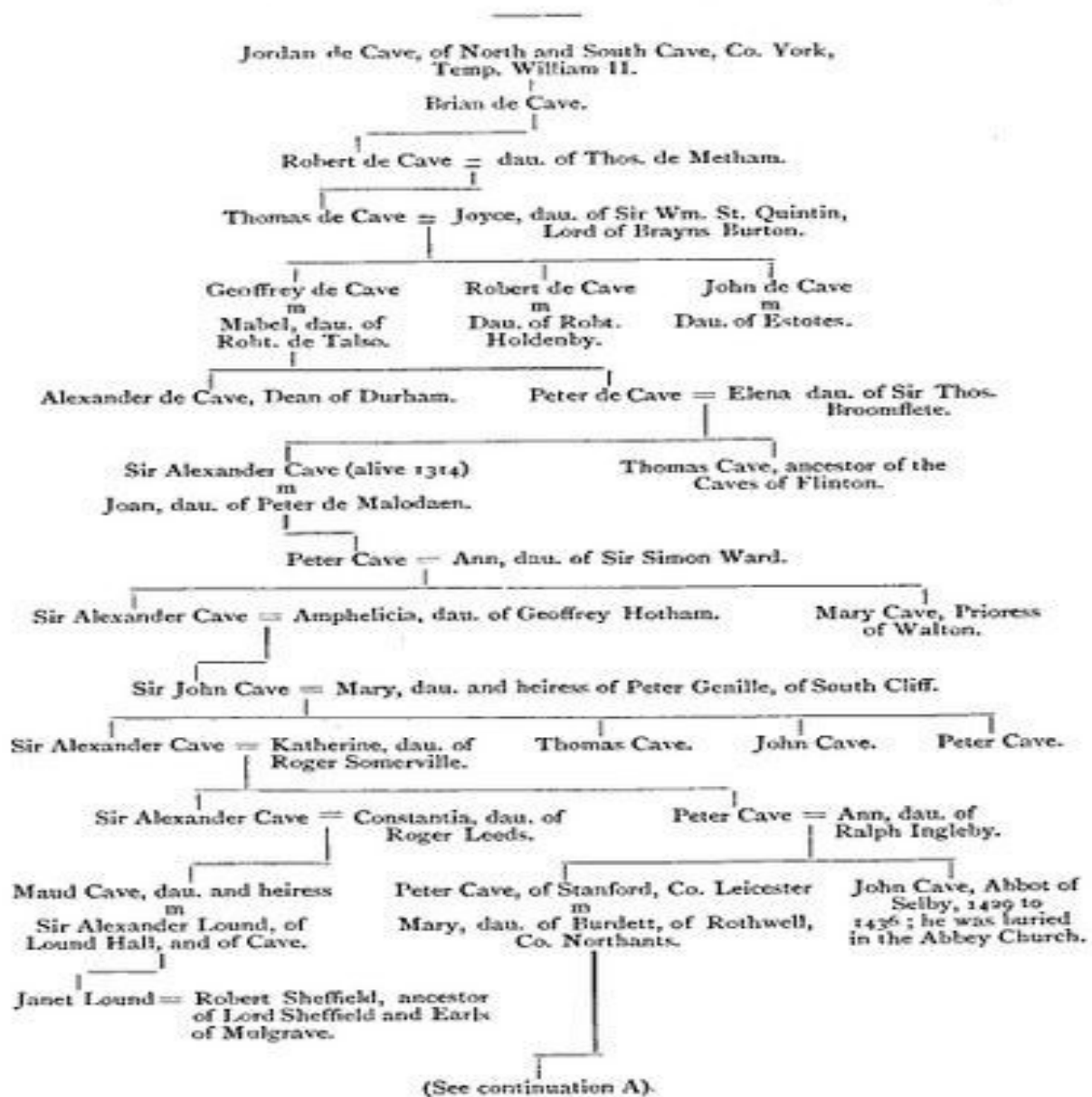
### Followups:

- [Re: Rev. John Cave of England Jon Cave 6/26/00](#)
  - [Re: Rev. John Cave of England Sharon 6/26/00](#)

It is felt that 1643 not 1543 is the correct date.



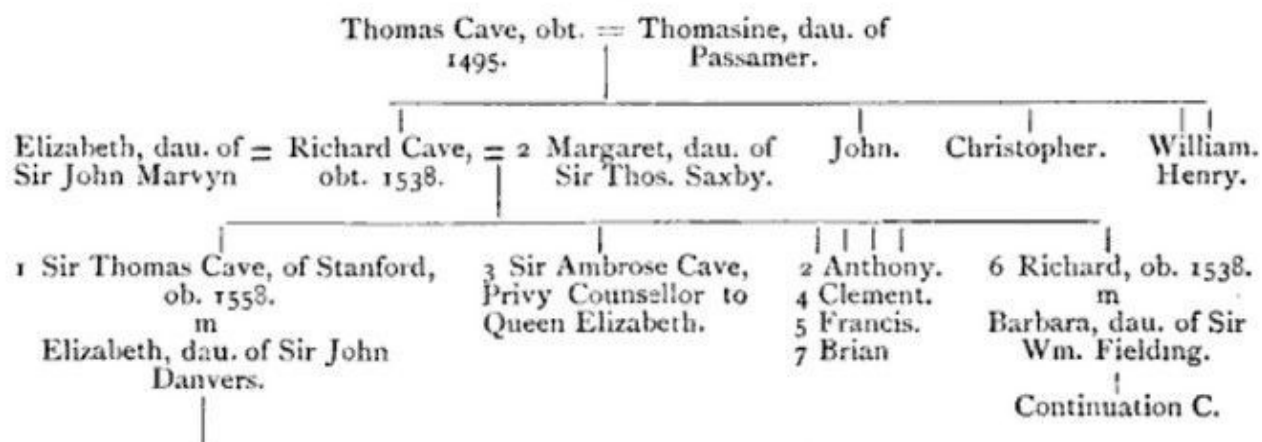
96 THE FAMILY OF CAVE.  
A history of South Cave and of other parishes in the East  
Riding of the ...  
The Caves of Cave, Co. York.



## The Caves of Stanford, Co. Leicester.

A history of South Cave and of other  
parishes in the East Riding of the ...  
By John George Hall

### Continuation A.



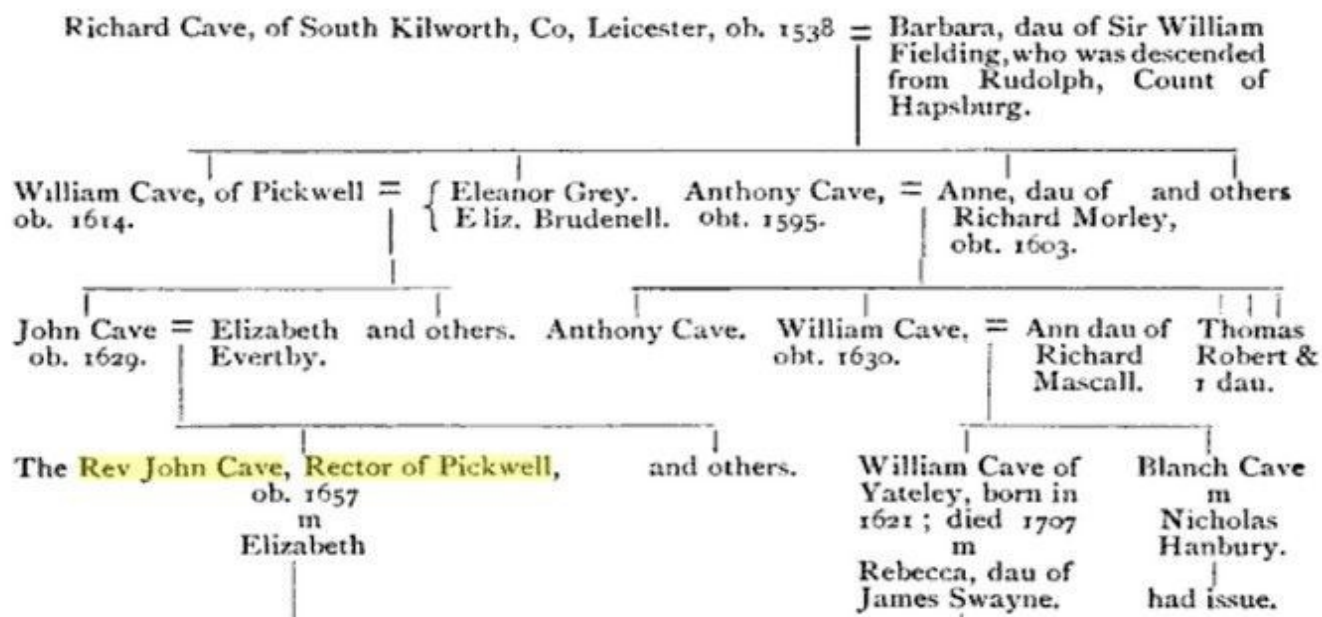
100

## THE FAMILY OF CAVE.

A history of South Cave and of other parishes in the East Riding of the ...  
By John George Hall

## The Caves of Yateley, Co. Hants.

### Continuation C.





150 JOHN CAVE, **RECTOR OF PICKWELL**, LEICESTERSHIRE.

but what I have already related : God send us better in His good time, and send peace to the kingdom, as may stand best for His glory. So having sufficiently tired you with this tedious discourse, I leave you to the Almighty ; resting, &c.”

JOHN CAVE, **Rector of Pickwell**, Leicestershire.—He was the father of the most learned and incomparable Dr. Cave, of Windsor, and third son of John Cave, Esq. He was born in this parish, and educated at Lincoln College, in Oxford, where he was chamber-fellow with the famous Dr. Sanderson for eight years. After he was settled in his native parish, he attended his ministerial cure with great diligence, and lived in “great esteem and respect with all his neighbours, till the breaking out of the great Rebellion in the year 1642. The first attack that was made upon him was when the Parliament sent a regiment to be quartered about that place, when six troopers with their horses were quartered upon him, who continued off and on for a year or two. They first attempted him by way of dispute, concerning the liturgy and constitution of the Church of England, which passed in writing, by way of objection and answer ; but finding they were likely to do little good that way, they betook themselves to

It should be noted that Rev John Cave is a Church of England Royalist, and his line can be traced to Cave of East Riding, Yorkshire.

# Scarborough;

← → ↻ 🏠 [https://my.familytreedna.com/maps\\_v2.aspx?dt=y12](https://my.familytreedna.com/maps_v2.aspx?dt=y12)

Y-DNA 12 Marker

**Exact Match**

Name: Larry D. Scarborough  
Most Distant Ancestor: Henry Scarborough, b c 1521, England  
Marker Location: Westminster, London, UK

Y-DNA 12 Marker Matches: 43

Show Match List    Update Ancestor's Location

Push Pin Match Colors

You	Exact	1-Step	2-Step	3-Step



Pop-up Pedigree

Father **Robert Scarborough, Chief Justice of the Common Pleas in Ireland** b. c 1300

Nicholas **Scarborough** was born circa 1335 at of Yorkshire, England. He married **Alice** circa 1358 at of Yorkshire, England. Nicholas Scarborough He and his wife were mentioned in a poll tax for Yorkshire in this year. in 1379. He died on 13 October 1387; His will mentions his 5 children.

Family **Alice** b. c 1337

Child ◦ **John Scarborough+** b. c 1360, d. a 1423

**Alice**

F, #134306, b. circa 1337

Alice was born circa 1337 at of Yorkshire, England. She married **Nicholas Scarborough**, son of **Robert Scarborough, Chief Justice of the Common Pleas in Ireland**, circa 1358 at of Yorkshire, England. Alice He and his wife were mentioned in a poll tax for Yorkshire in this year. in 1379.

Family **Nicholas Scarborough** b. c 1335, d. 13 Oct 1387

Child ◦ **John Scarborough+** b. c 1360, d. a 1423

**Robert Scarborough, Chief Justice of the Common Pleas in Ireland**

M, #134307, b. circa 1300

Pop-up Pedigree

Father **Henry Scarborough** b. c 1270

Robert **Scarborough**, Chief Justice of the Common Pleas in Ireland was born circa 1300. He Chief Justice of the Common Pleas in Ireland. in 1331 at Ireland.

Mark Elliott

3/26/2013