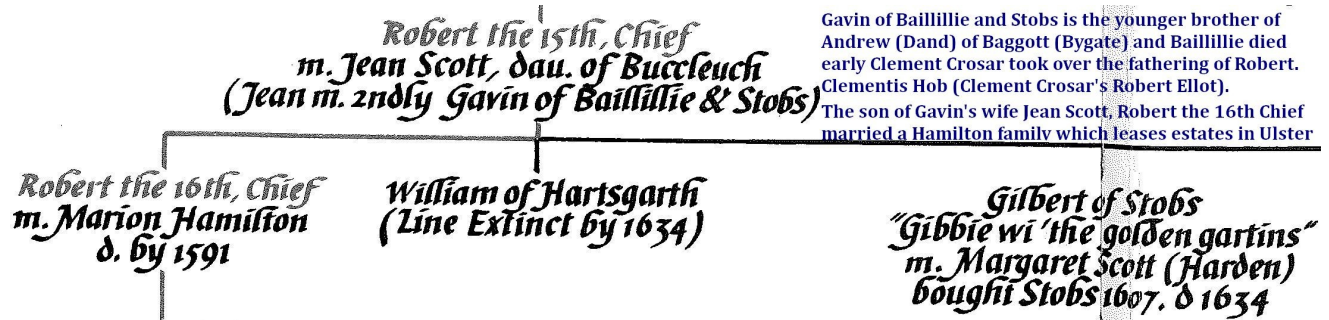


Need to relocate Braidley or drop map link.



<http://www.elliotclan.com/history/map-of-elliot-territory/>

Need to show you my blood line so you will take me serious (joking);

VII.  
 Thai theifs that steills, and turfis hame,  
 Ilk ane of thame hes ane *to-name* ;  
*Will of the Lawis* ;  
*Hab of the Schawis* : To mak bair wawis  
 Thay think na schame.

VIII.  
 Thay spuillye puir men of thair pakis.  
 Thay leif thame nocht on bed, nor bakis.  
 Bayth hen, and cok,  
 With reil, and rok, *The Lairdis Jok*  
 All with him takis.

IX.  
 Thay leif not spendil, spone, nor speit ;  
 Bed, bofter, blanket, fark, nor scheit.  
*Jobne of the Parke*  
 Ryps kist, and ark. For all sic wark  
 He is richt meit.

X.  
 He is weil kend, *Jobne of the Syide*,  
 A gretar theif did never ryide.  
 He never tyris  
 For to brek byris. Our muir, and myris,  
 Ouir gude ane gyide.

XI.  
 Thair is ane, callit *Clement's Hob*,  
 Fra ilk puir wyfe reiffis the wob.  
 And all the laif  
 Quhatever thay haif. The devil refave  
 Thairfoir his gob.

VOL. III. O XII.

AGANIS THE  
 THIEVIS OF  
 LIDDISDAIL:  
 written  
 perhaps in  
 Summer 1561

Chronicle of  
 Scottish  
 poetry: from  
 the  
 thirteenth  
 century, to  
 the union of  
 ...  
 edited by  
 James  
 Sibbald

There you see Clementis Hob, what kind of person do you think his father is?

Information in the book by Maggie's father is excellent, so do not bring the problem to her it was created on the end paper of the books. Others are responsible if others do not correct the information, then they are not following the direction of her father in getting information correct.



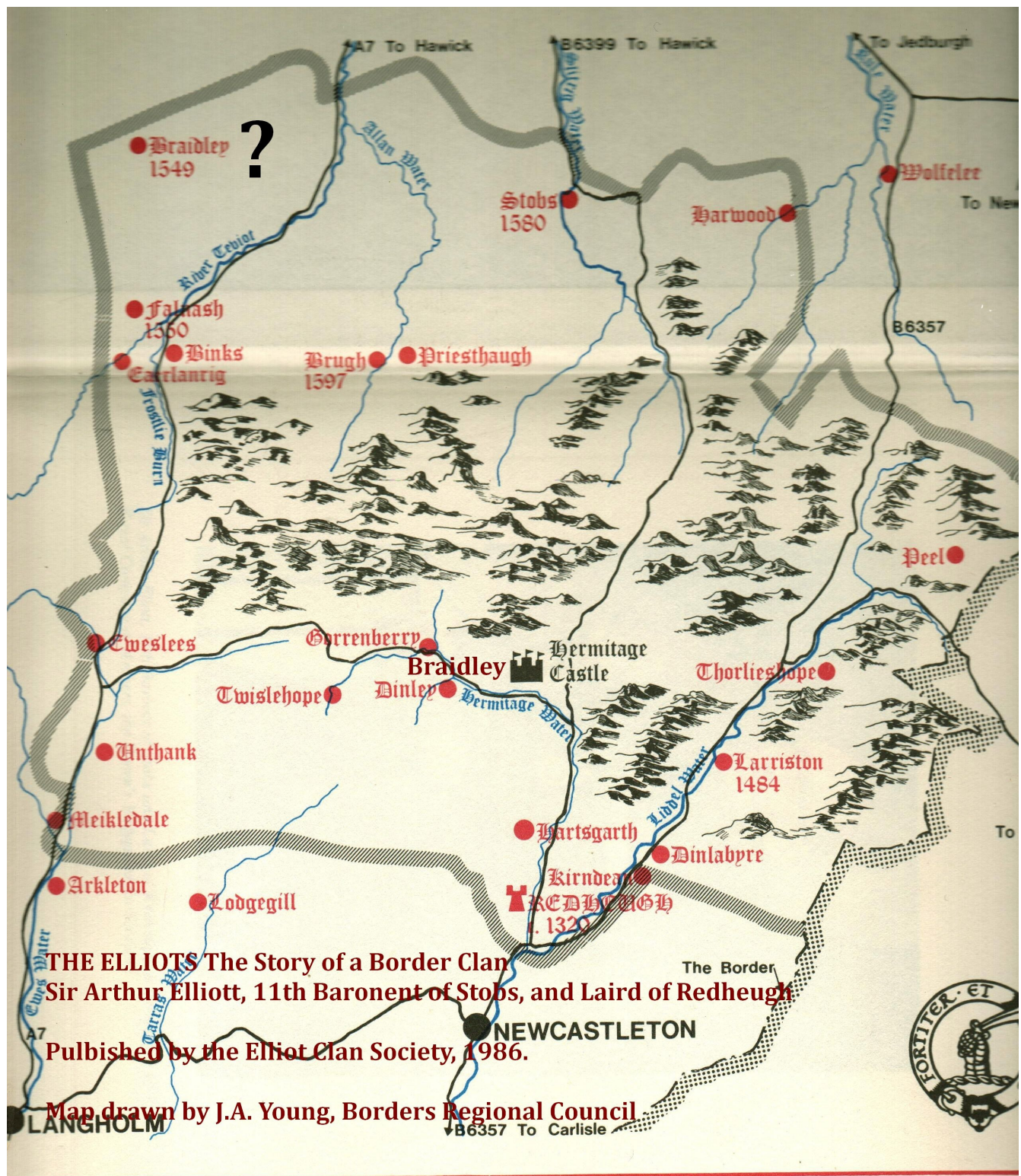
It can be seen that in 1974 the endpaper map was done by George Evans.

It should be noted that it was established in errors years ago, if someone can do an impressive job of finding George Evans or J.A. Young given the years 1974, and 1986 respectively.

The correction to the link needs to be done by the Elliot Clan Society. This is a question whether the clan can act on sound information to correct an error



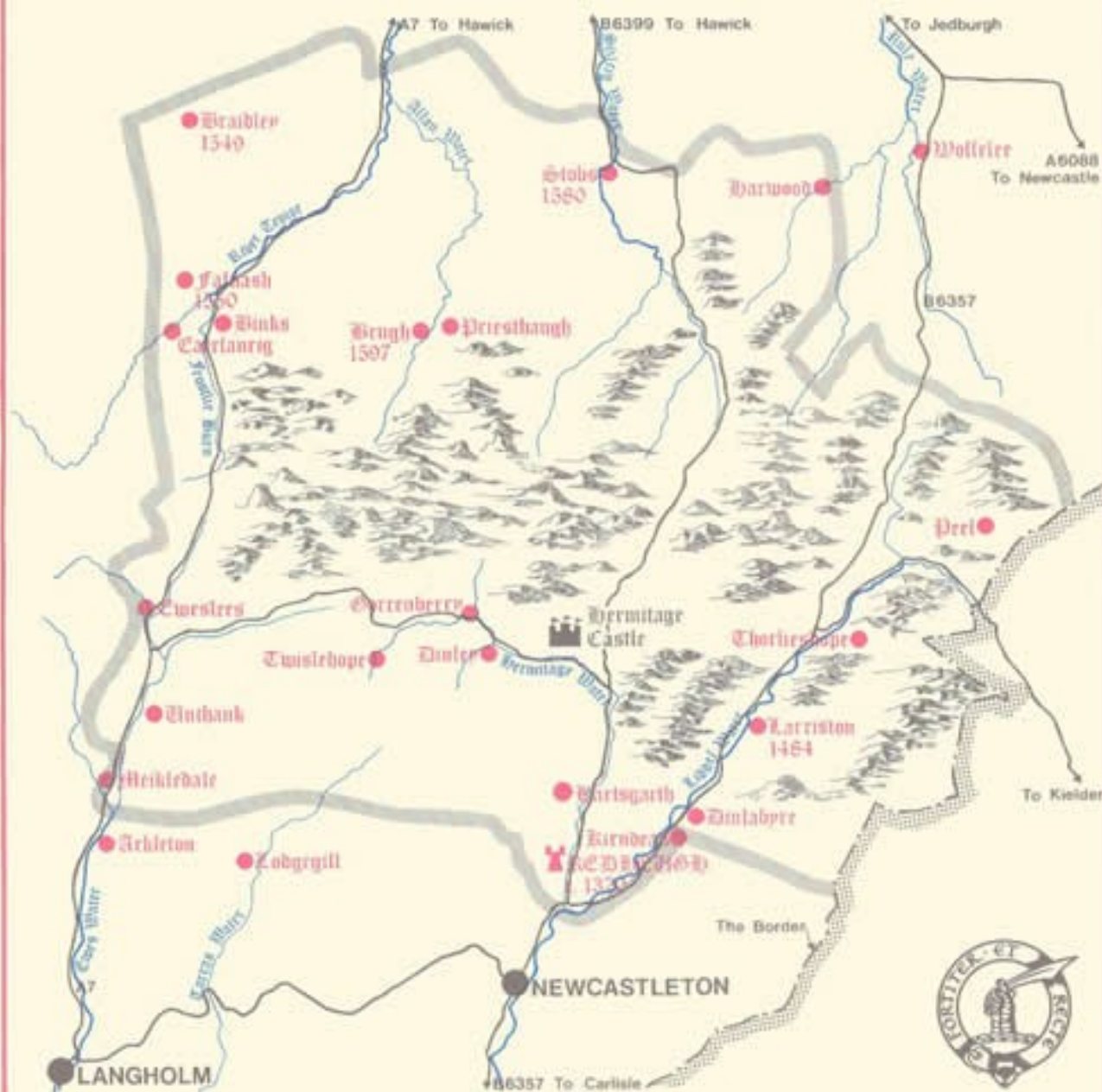
which is decades old.



The above map is from the map draw and placed in the end paper of in Sir Arthur Elliott, Published by the Elliot Clan Society, 1986



# MAP OF ELLIOT CLAN TERRITORY IN ABOUT 1600

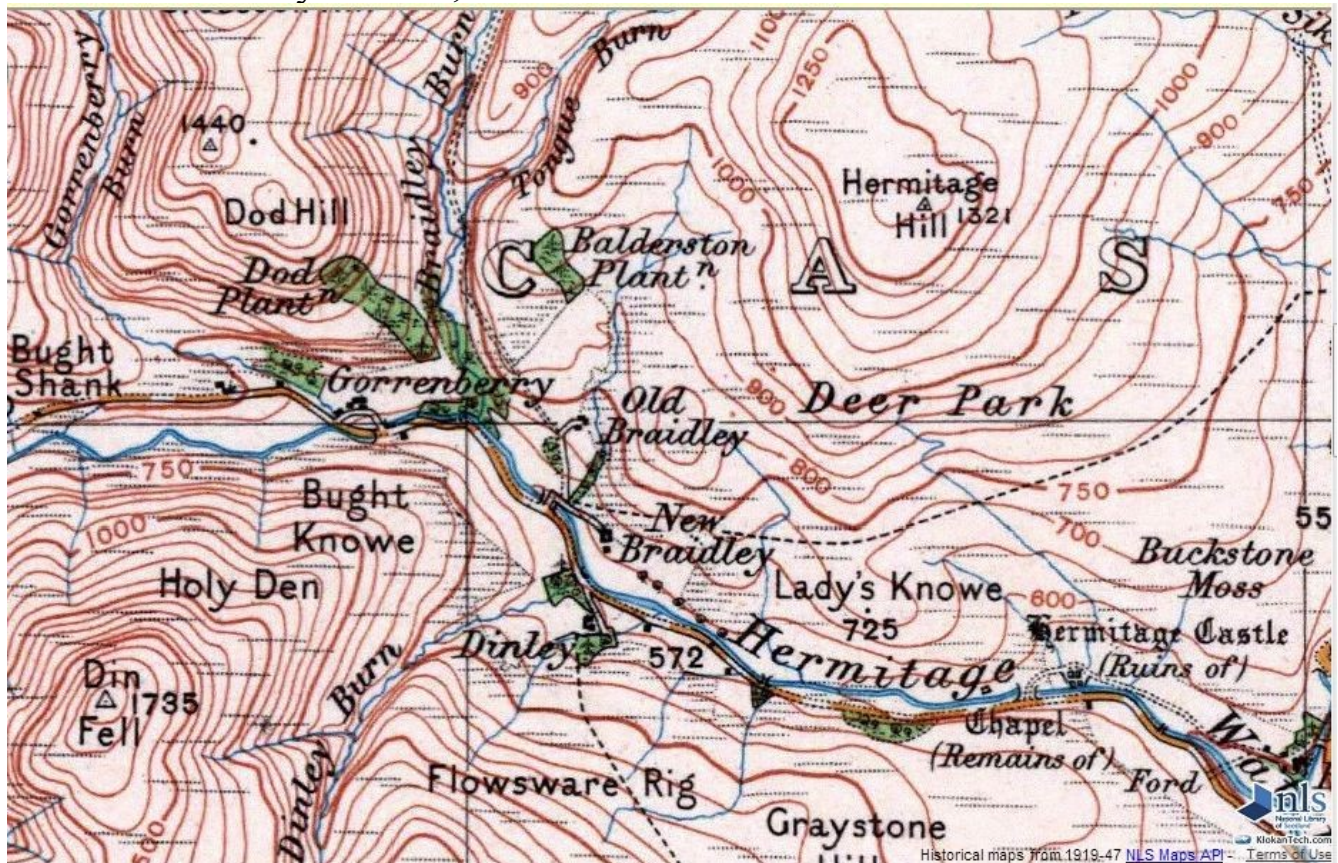




It is map drawn by J.A. Young, Borders Regional Council. Still has Braidley in the same location. Similar to the one below you have on line. Found out I am from a black sheep line, so you do not need to have my border reiving genealogy.



Where is Braidley located;



[www.kitgan.com/united-kingdom/destinations-by-category/Rivers-in-Scottish-Borders](http://www.kitgan.com/united-kingdom/destinations-by-category/Rivers-in-Scottish-Borders)

#### Hermitage Water



The Hermitage Water is a river in Liddesdale, in the Scottish Borders area of Scotland. Among its many feeder burns are **Braidley Burn**, **Dinley Burn**, **Gorrenberry Burn** and Twislehope Burn. The Water flows through the hamlets of Dinley and Gorrenberry, and through the village of Hermitage, and past Hermitage Castle. It continues past Totholm where it meets the B6399, and passes Newlands, Longhaugh, Leahaugh and Redheugh. At Sandholm it joins the Liddel Water and the dismantled r...  
[Hermitage Water]





## ROXBURGHSHIRE

May G. Williamson

The Non-Celtic Place-Names of the Scottish Border Counties  
Unpublished PhD thesis, University of Edinburgh, 1942

**BLAINSLIE** (Mel): (80, 14 A):

*Bleineslei*, 1178-1204 LSMM; *Blainesleie*, 1175-89 *ib*; *Blanesleye*, 1175-92 *ib*. The first element may be the personal name *Blahanus*, *Bleinus* which is found among the signatures to charters in 1127 and c 1130 (ESC, 60, 119). This may represent OGael *Bláán*, which Watson claims as the second element of Dunblane (CPNS, 164).

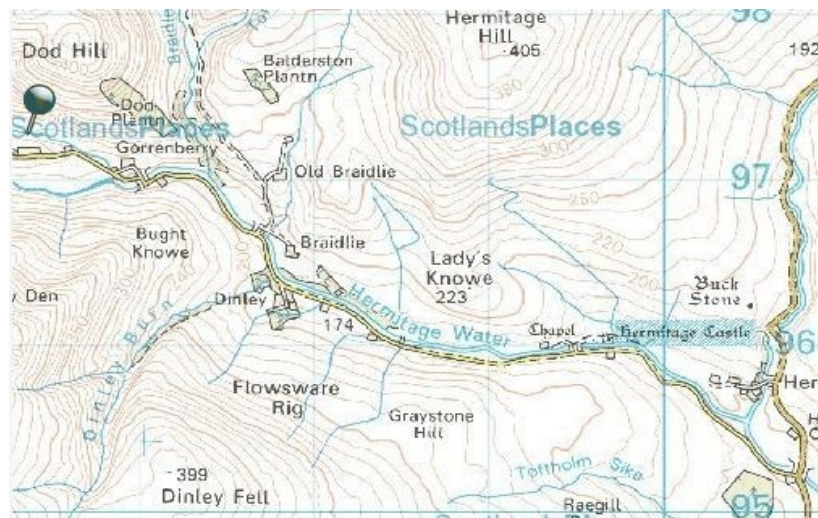
/72/

**BRAIDLEY** (Cst):

*Braidleis*, 1572 HMC (*Jhn*). MSc *braid ley*, “broad open space”, the anglicised form of which is seen in –

**BROADLEE** (Rbt):

*Bradeley(e)* (P), 1296 CDS (Seal); 1296 *Inst Pub*; *Braidle*, 1511 RMS.

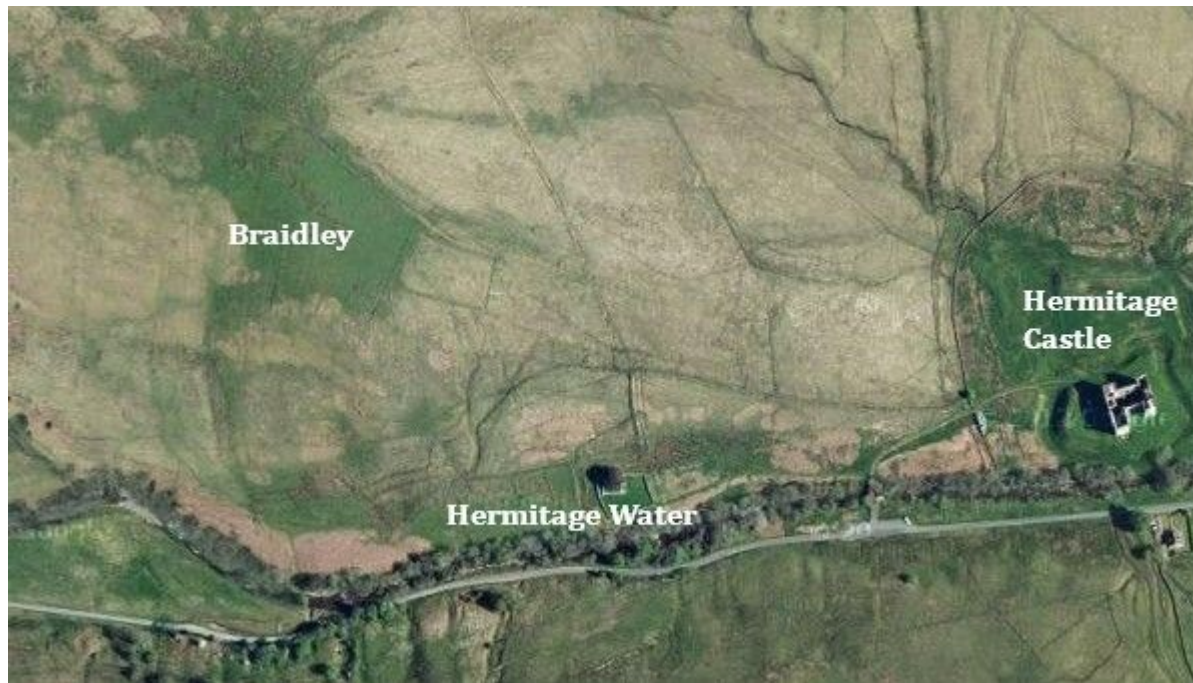


### ORIGIN OF THE BORDER CLANS.

3

stood the **tower** of the Elliots of Goranberry, whose importance in the clan may be measured by the circumstance of their having had a supernatural ally to themselves. The Brownie of Goranberry still lives in tradition, and is said never to have failed the family in faithful service, till its last member had been gathered to his fathers. Disdaining no toil, however servile, doing many a busy night's work in silence under the harvest-moon, the Brownie's chief duty lay in averting by timely warning the approach of danger. Mute at all other times, his voice was then heard like the sighing of the autumn wind, rising into shrieks and passionate wails when dread passed into certainty of woe.<sup>1</sup>





As one can see on the satellite map Braidley of Roxburgshire is a wide open space.





of the said Robert Elwald, and for a similar cause as the preceding, of the lands of "Layhalcht, Carolschelis, harts-garth et le faulde," lying in the lordship of "ledesdale" and sheriffdom of Roxburgh, to be held for the services of ward and relief.

On 8th January, 1479,<sup>1</sup> Angus granted a precept for infefting the said Robert Elwald in the lands in the last mentioned charter.

On 20th September, 1484,<sup>2</sup> Angus again executed a precept directed to "Walter Scot de Edschan, Radulpho Ker, fratri Wateri Ker de Cesfurd et Willielmo Elwaldo de goranbery" to infest Robert Elwald of the Redheuch in the 20 merk lands of Over and Nether "Larrostane."

On 13th November, 1489,<sup>3</sup> at "Calco," the earl directed a further precept to William Ker of "Mersyntoune Radulpho Ker de Primsyde louch, Wilielmo elwad de gouinbery et Wilelmo gledstanys" to infest Robert Elwad of the "Redehuch" in the lands commonly called "rede-

The above at the time Robert the squire of Archibald (Bell the Cat) Douglas, Willielmo (William) Elwaldo (Elwald) de goranbery (Gorrenberry) seems to be listed among landholders. Land of this region would be land of Braidley also.

The clan map being incorrect can only stagnate genealogical research.